



# **CLEAR-GUARD**

**CLEAR POLYCARBONATE SLATS**

### **Clear Polycarbonate Slats - CLEAR-GUARD - Don't sacrificing design.**

Introducing Clear-Guard Polycarbonate Window Slats, the innovative, revolutionary security barrier designed specifically for home or commercial windows with the visual appeal you've been waiting for.

#### **Unmatched Clarity:**

Clear-Guard features high-impact, 6mm thick polycarbonate slats housed within a sleek Aluminium frame. This unique design allows for maximum light penetration, meaning your home or workplace won't feel like a jail. Unlike traditional steel bars, Clear-Guard doesn't obstruct your view outdoors.

#### **Superior Security & Peace of Mind:**

Don't be fooled by its transparency. Clear-Guard offers exceptional security. The 6mm thick polycarbonate slats are virtually unbreakable, acting as a formidable deterrent against robbery.

The slats pass through aluminium intermediate uprights with no visible fasteners on the outside. Uprights are attached top and bottom, and on the sides of the window frame. These upright members are slim profile with minimal bulkiness. The slats are spaced vertically at 105mm (75mm gap) and horizontally have a maximum span of 800mm between supports, provides additional strength and stability.

(Windows bigger than this will have intermediate vertical supports mid-span

)

#### **Here's why Clear-Guard is the perfect security solution for your home or business:**

- Unobstructed View: Unlike steel bars, Clear-Guard maximizes visibility, maintaining view enjoyment with approximately 95% light transmission\*.
- Exceptional Security: High-impact polycarbonate slats and a strong aluminium frame deter break-ins.
- Modern & Customizable Design: The sleek aesthetic complements your home and allows for colour customization.
- Durable & Low Maintenance: Clear-Guard requires minimal maintenance, only occasional cleaning, making it a cost-effective long-term solution.

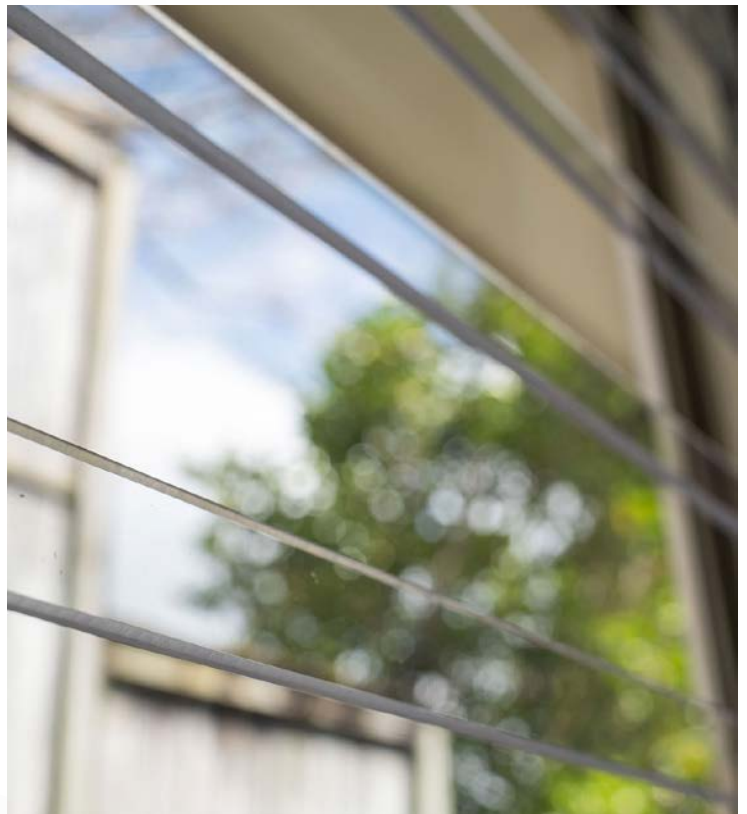
\*Light transmission is derived from the polycarbonate spec sheet as 85%, but accounting for the space between slats the percentage is effectively 95%

\*\* Effectiveness greatly enhanced by having more aluminium intermediate-uprights where possible.

\*\*\* Will usually be recommended in conjunction with additional security for your doorways.

#### **Important:**

Security level of Clear-Guard would be appropriate for any home application, and commercial office windows not in a store-front. For storefront applications we recommend our Invisi-Guard Polycarbonate system, as they are likely to face more violent attacks.





*Unobstructed View from Inside..*



Clear-Guard creates a powerful barrier that deters intruders while maintaining a clear, unobstructed view.



Consealed Fixings  
Call us: 0800 334 335

[www.xpanda.co.nz](http://www.xpanda.co.nz)

## FIXED WINDOW & DOOR SECURITY COMPARISON

- **STEEL MESH SCREENS**
- **STEEL WINDOW BARS**
- **CLEAR-GUARD POLYCARBONATE SLATS**
- **INVISI-GUARD POLYCARBONATE SLATS**

	Steel Mesh Screen	Durabar Steel Bars	Clear-Guard Polycarbonate	Invisi-Guard Polycarbonate
<b>Cost</b>	\$\$	\$	\$\$	\$\$\$
<b>Aluminium Framed Doors</b>	•			
<b>Timber Framed Doors</b>	•			
<b>Aluminium Framed Windows</b>	•	•	•	•
<b>Timber Framed Windows</b>	•	•	•	•
<b>Emergency Exit</b>	•			
<b>Can be opened</b>	Opens with door			
<b>Counter Tops (Anti-Jump)</b>		•		•
<b>Wide Spaces</b>		•	•	•
<b>Outdoors</b>	• **	• **		
<b>Colour choice</b>	Any*	Any*	Any*	Any*
<b>Stops Vehicle</b>	Only bollards or Ram-beams will stop vehicles			
<b>Security Level</b>	High	High	Medium	High
<b>Outdoors</b>	• **	• **	• **	
<b>Ideal Locations</b>	Fire Exits, Inward-opening first access, All Windows, All Doors with Frame	All Windows, Shop Counter Tops.	Residential and Com- mercial Windows.	All Windows, and shopfronts. Shop Counter Tops.

A basic guide to product comparisons can be found above. Ultimately our expert will present any options available when we visit to quote.

\* Colour choice is within the Dulux Powder coat colour range.

\*\* Outdoors is possible if there is no other option but this is not always recommended in terms of security level.