

INVISI-GUARD



POLYCARBONATE WINDOW SECURITY SLATS



XPANDA STRONG

Xpanda
SECURITY
All steel security products

Instagram #Xpandastrong

www.xpanda.co.nz

Clear Polycarbonate Window Slats - INVISI-GUARD

Do you want to enhance your shopfront security without compromising appearance? Xpanda's innovative Invisi-Guard offers a game-changing solution. Invisi-Guard features virtually unbreakable 10mm thick x 80mm wide clear polycarbonate slats within a sleek steel frame. This creates a powerful, yet much less visible barrier that deters intruders while maintaining a clear, unobstructed view of your fourcourt or customers approaching.

Here's why Invisi-Guard is the perfect choice for your windows:

Technical Specifications:

- Slats: 10mm thick x 80mm wide clear polycarb.
- Double steel ends, and intermediate supports. 25mm x 25mm steel every 800-1200mm
- Powder coating available in all Dulux powder coat colours

Polycarbonate Properties:

- High abrasive resistance
- Impact resistant- virtually unbreakable
- Resistant to vandalism
- High chemical resistance
- Around 94% light transmission average
- Partially Blocks out UV

Hidden strength..

Concealed fixings ensure vulnerable points are protected, with triple-fixed slat-to-steel fixings are on the back, away from view.

Invisi-Guard's polycarbonate slats are incredibly strong, resisting forceful attacks and offering protection comparable to steel bars.

Enhanced aesthetics & visuals..

Crystal-Clear Visibility The transparent design allows for maximum light penetration, creating an open and inviting atmosphere for customers. Now you can say goodbye to bulky steel bars! Invisi-Guard enhances your store's appearance, creating a welcoming and modern look.

Tailored to your style..

Any steel parts can be powder coated in a range of Dulux colors to perfectly match your shop's décor.

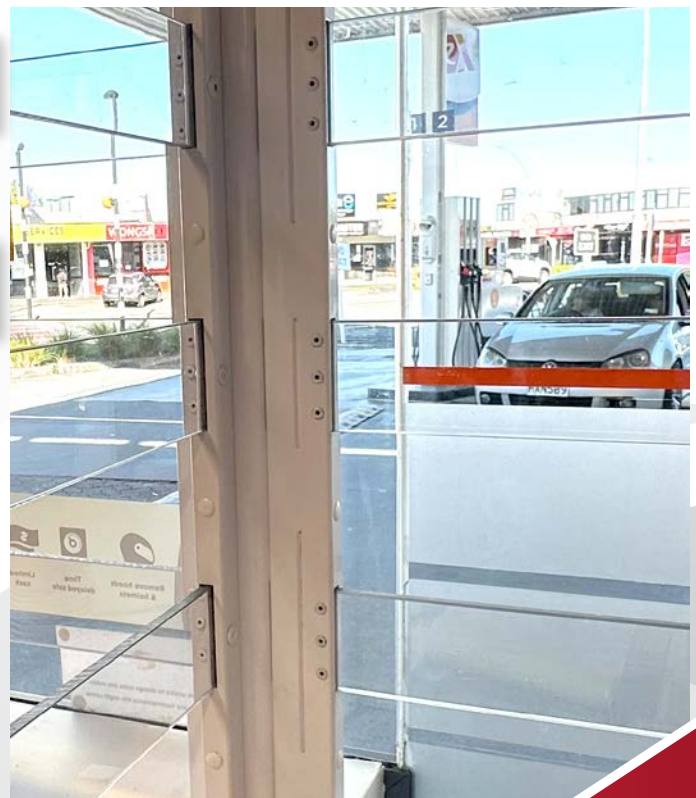
Minimal disruption..

Invisi-Guard is designed for simple and efficient installation, minimizing disruption to your business operations.

Now you can upgrade your security without compromising on style.

Contact Xpanda today and discover the Invisi-Guard

Concealed steel rivets are not accessible from outside. This is a junction between Anti-Jump system on the countertop and the storefront window protection ►

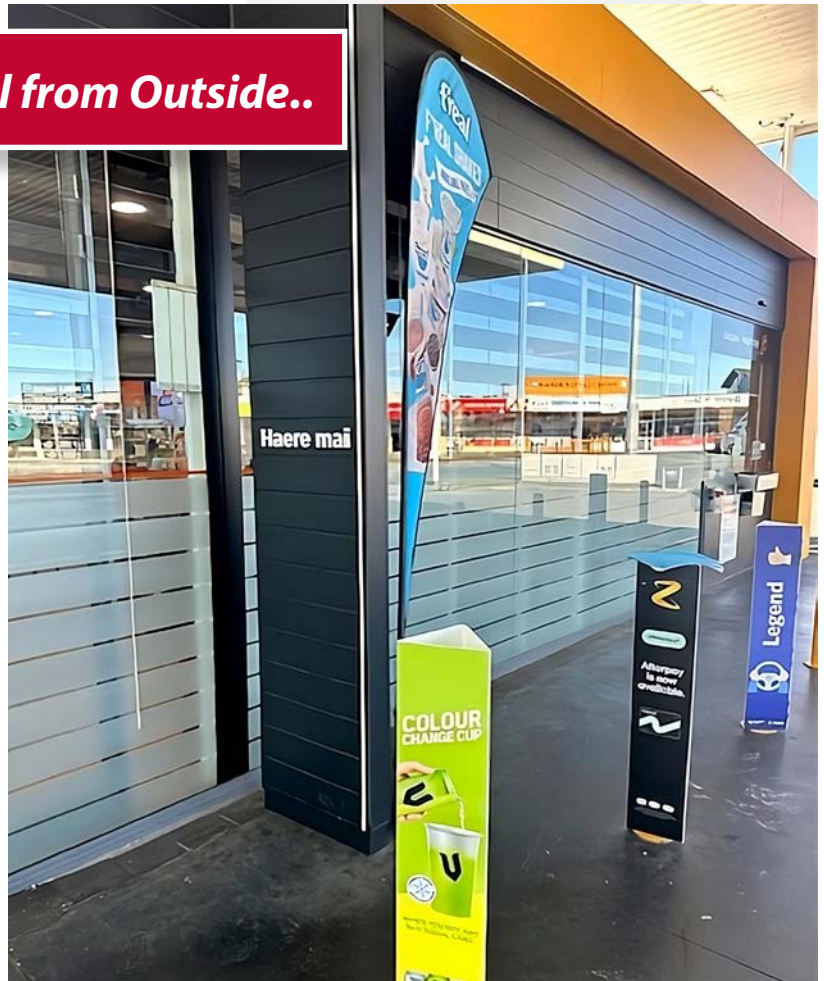


Unmatched Visual Appeal from Outside..

Invisi-Guard elevates the aesthetics of your storefront. The clear polycarbonate slats create a modern and sophisticated look that complements any business style.

Invisi-Guard features high-impact, 10mm thick polycarbonate slats housed within a sleek steel frame. Unlike traditional steel bars, Invisi-Guard won't obstruct customer's view of your products, nor your view out of the store – fostering a more engaging shopping experience.

Plus, you can customize the powder-coated steel frame either blend in nicely, or to perfectly match your brand with a wide range of Dulux powder coat colours.



Unobstructed view from inside..

Invisi-Guard creates a powerful barrier that deters intruders while maintaining a clear, unobstructed view.

The crystal-clear design allows for maximum light penetration. This unique design creates an open and inviting atmosphere for your customers.

